



United States Department of Agriculture  
**National Agricultural Statistics Service**

---

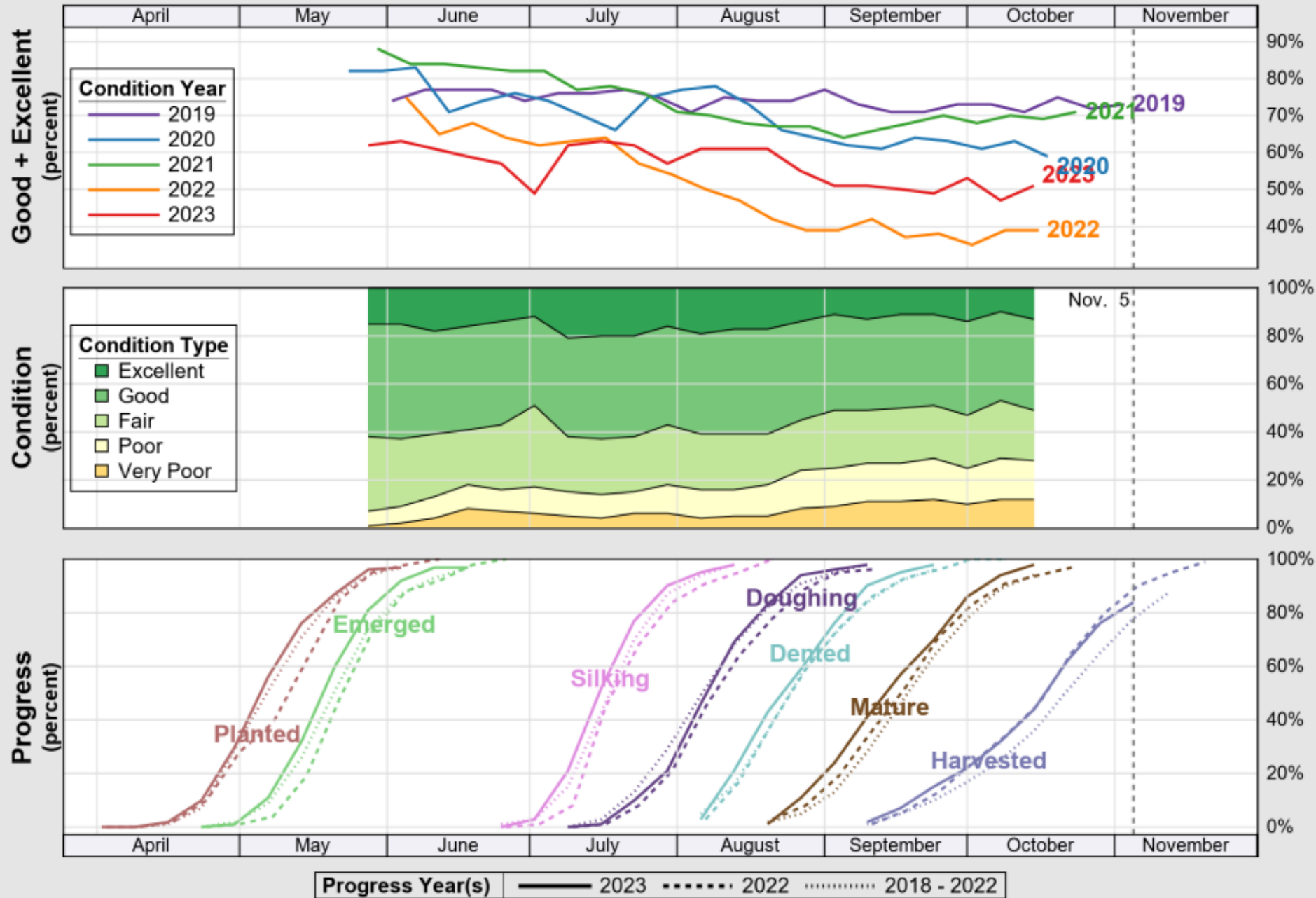
---

# **October Crop Report**

## **November 5 Crop Progress and Condition**

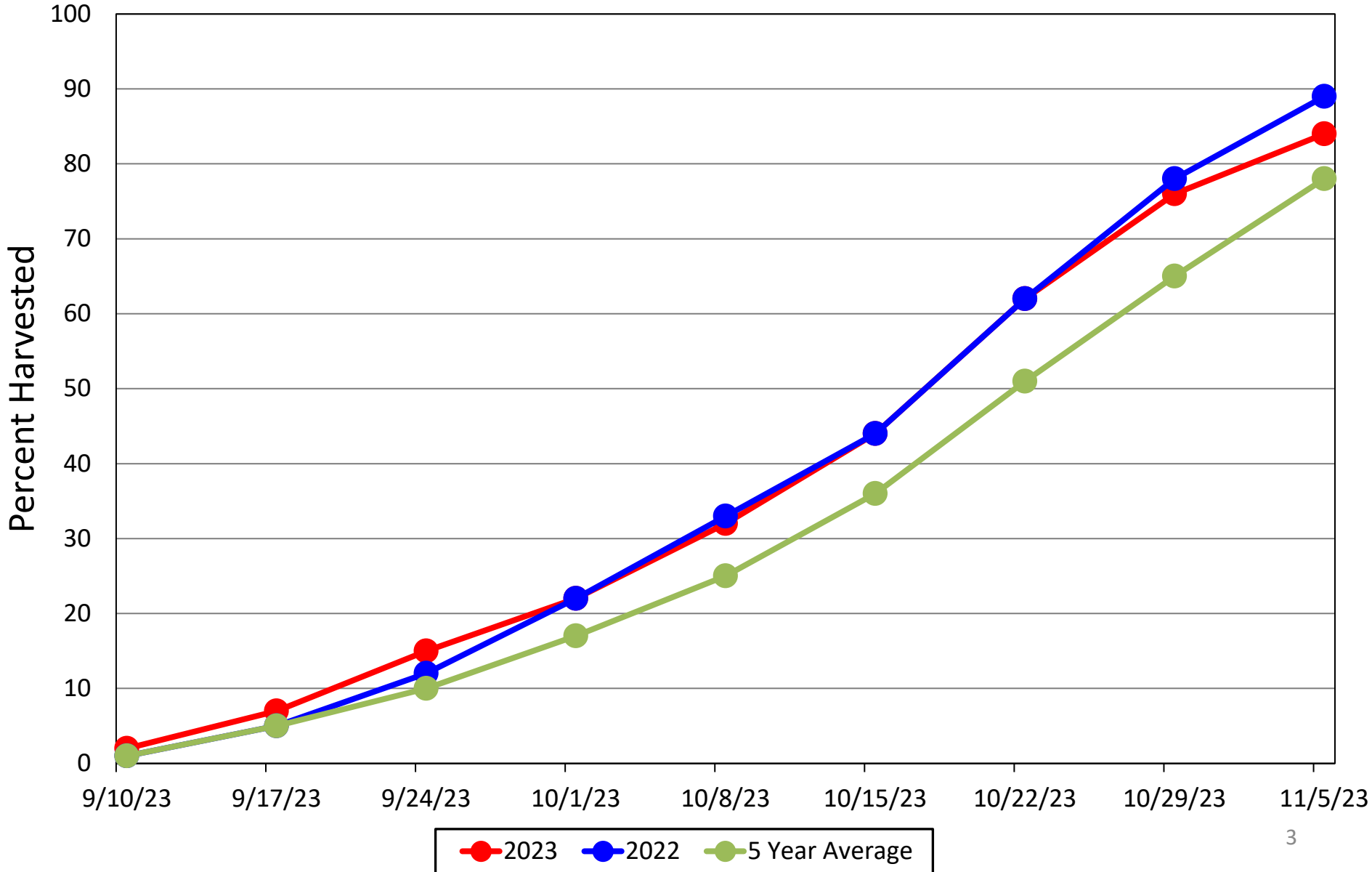
**Nick Streff  
USDA NASS**

November 7, 2023



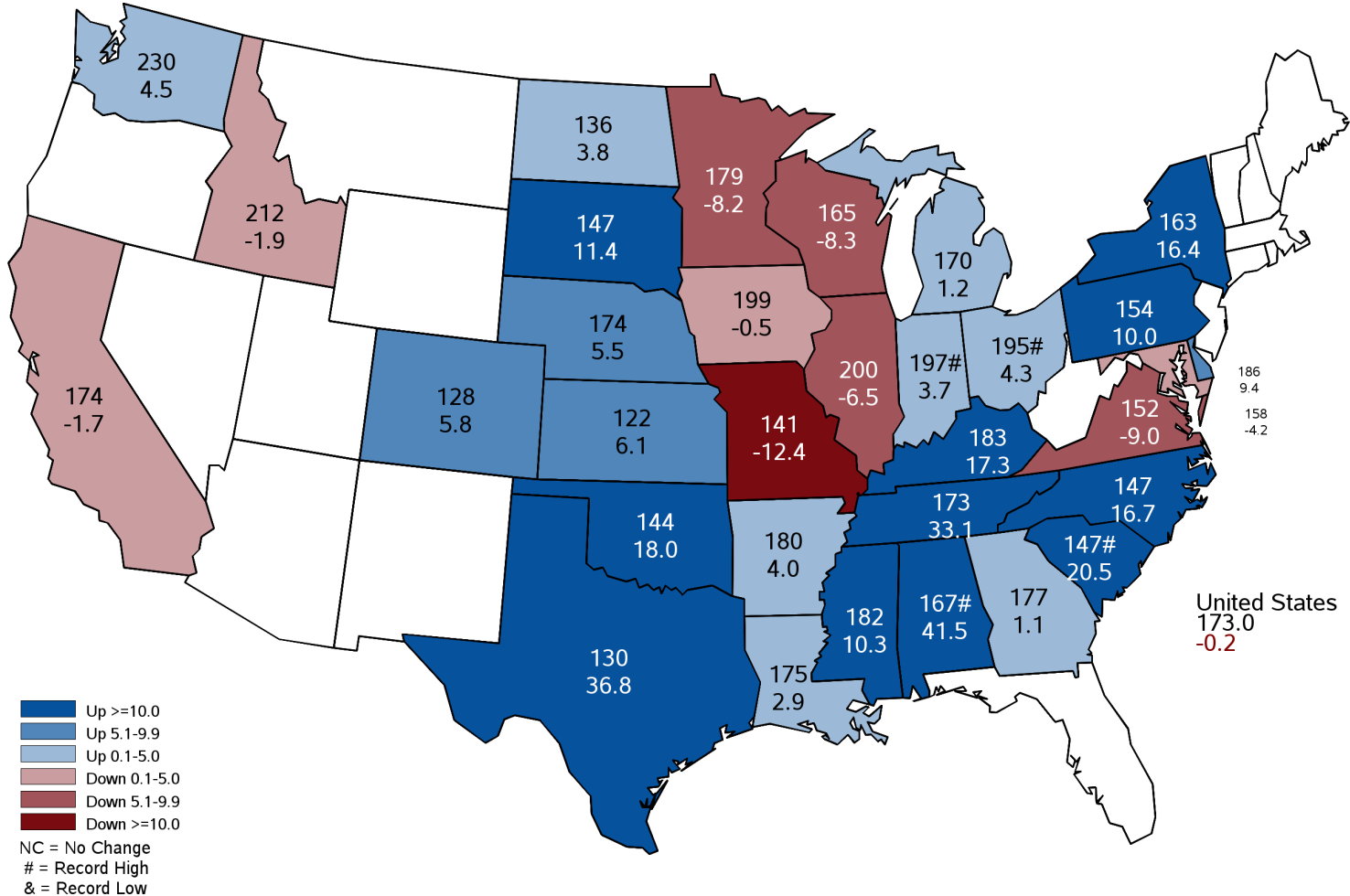


# Nebraska Corn Harvest Progress



# October 2023 Corn Yield

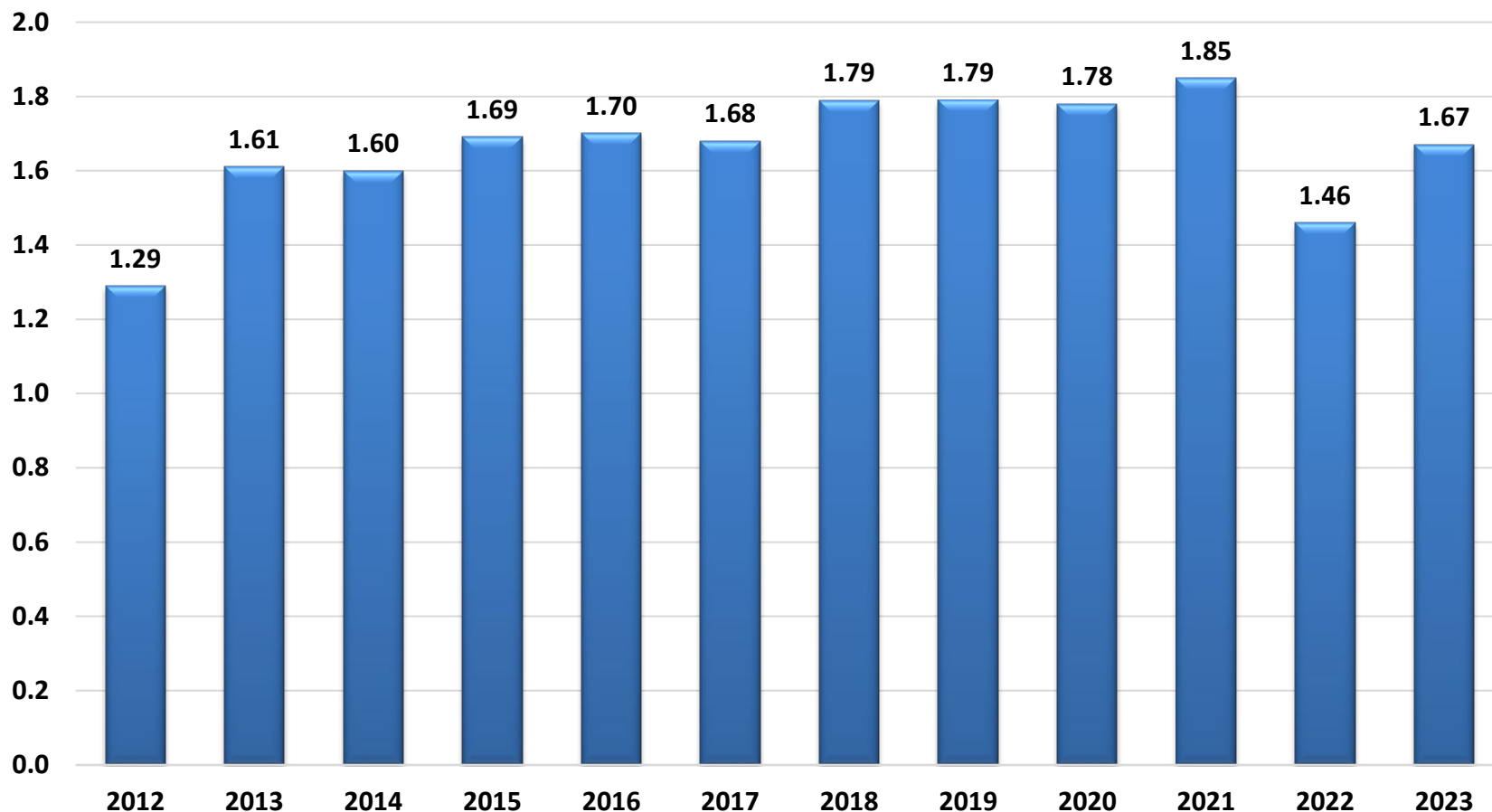
## Bushels and Percent Change from Previous Year

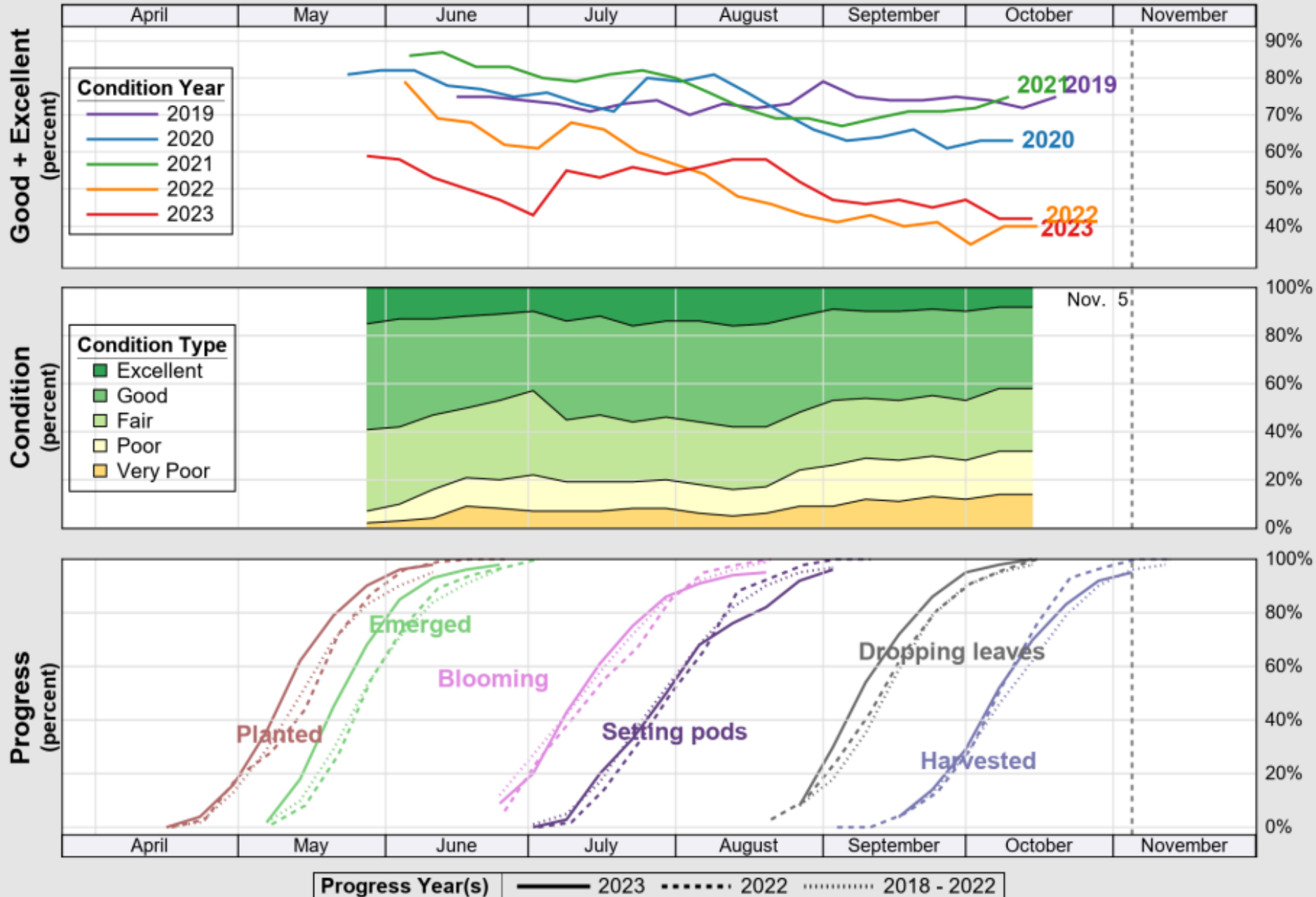


# November 2023 Corn Production

## Nebraska

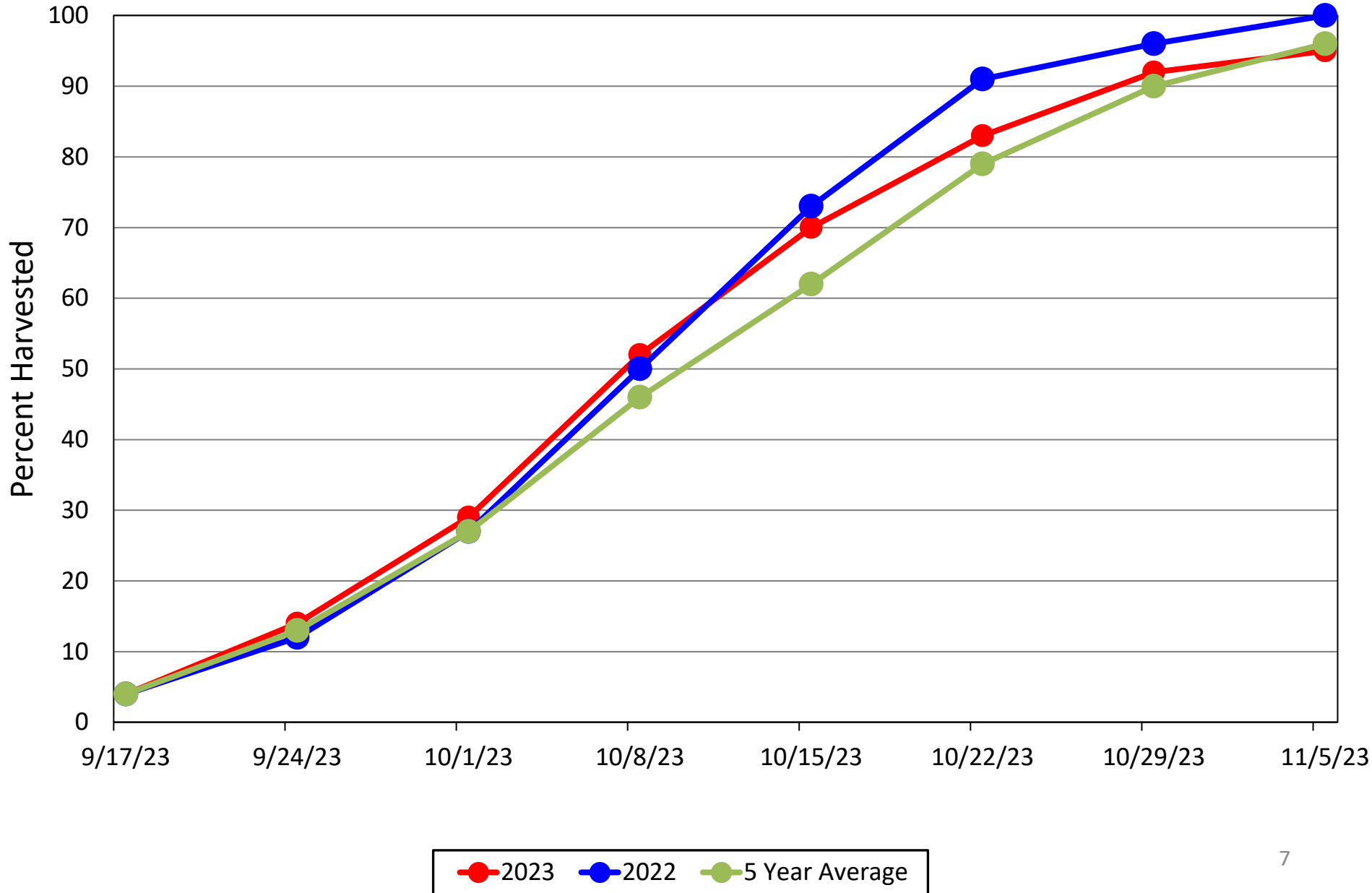
**Billion Bushels**





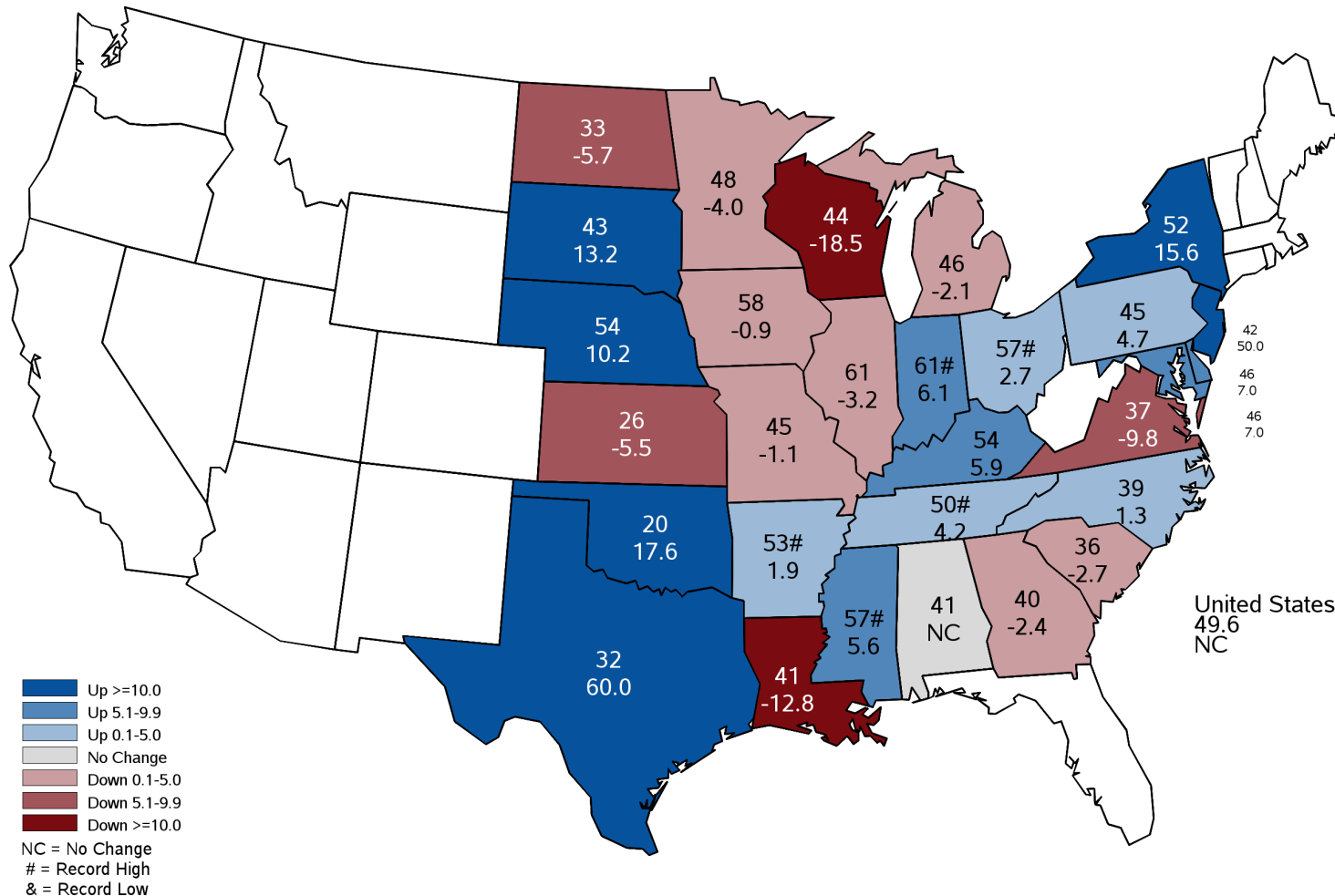


# Nebraska Soybean Harvest Progress



# October 2023 Soybean Yield

## Bushels and Percent Change from Previous Year

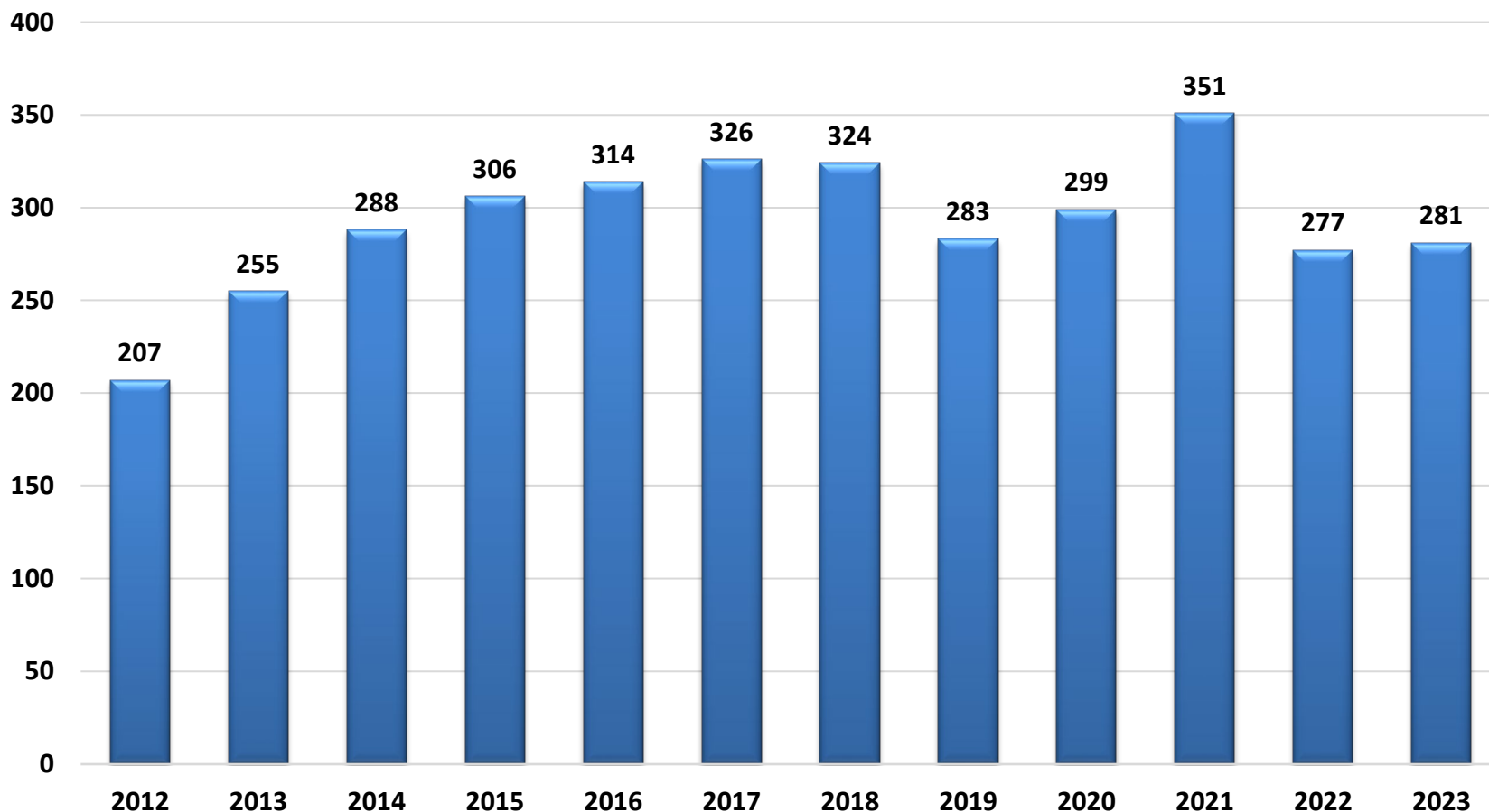




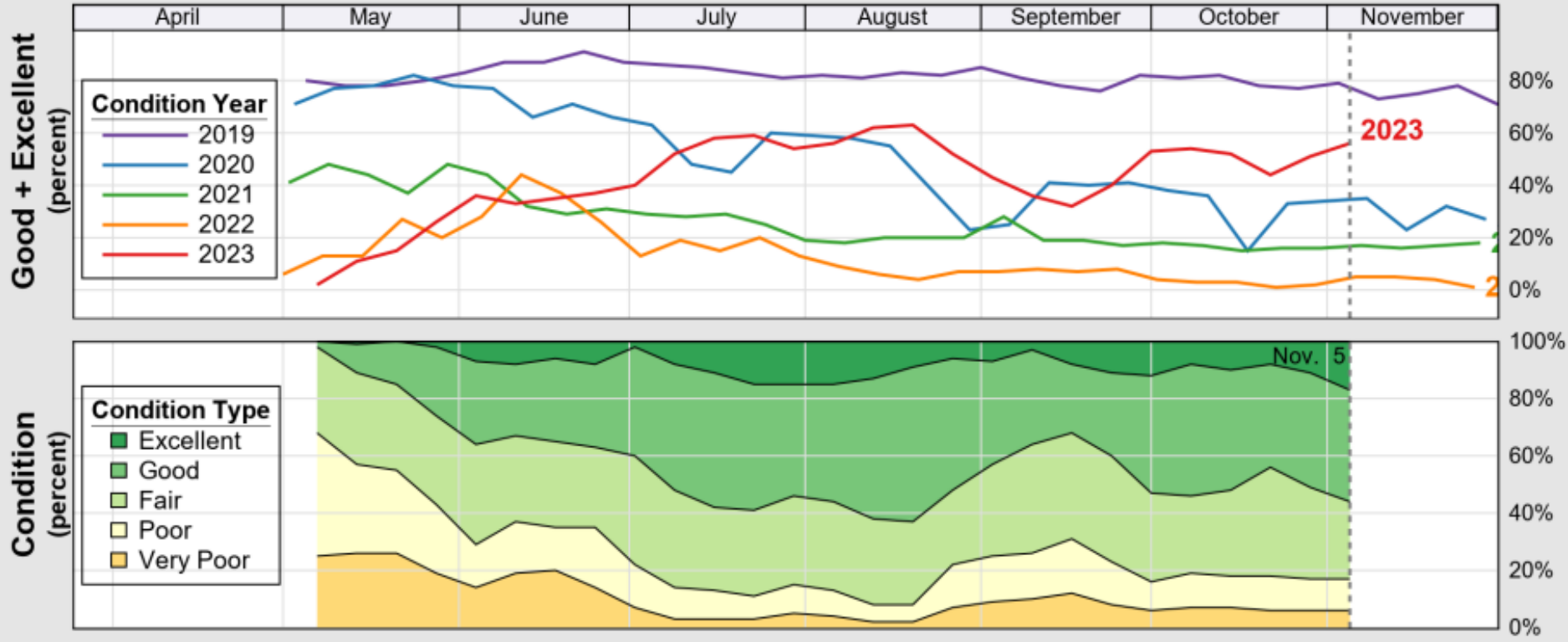
# November 2023 Soybean Production

## Nebraska

Million Bushels



# Crop Progress and Condition: Pasture and Range in Nebraska, 2023





# Crop Progress and Condition Report

## November 5, 2023

	<b>Very Short</b>	<b>Short</b>	<b>Adequate</b>	<b>Surplus</b>
Topsoil Moisture	21%	29%	48%	2%
Subsoil Moisture	26%	37%	33%	4%

	<b>Very Poor</b>	<b>Poor</b>	<b>Fair</b>	<b>Good</b>	<b>Excellent</b>
Winter Wheat Condition	3%	12%	35%	39%	11%



# October 2023 Crop Production

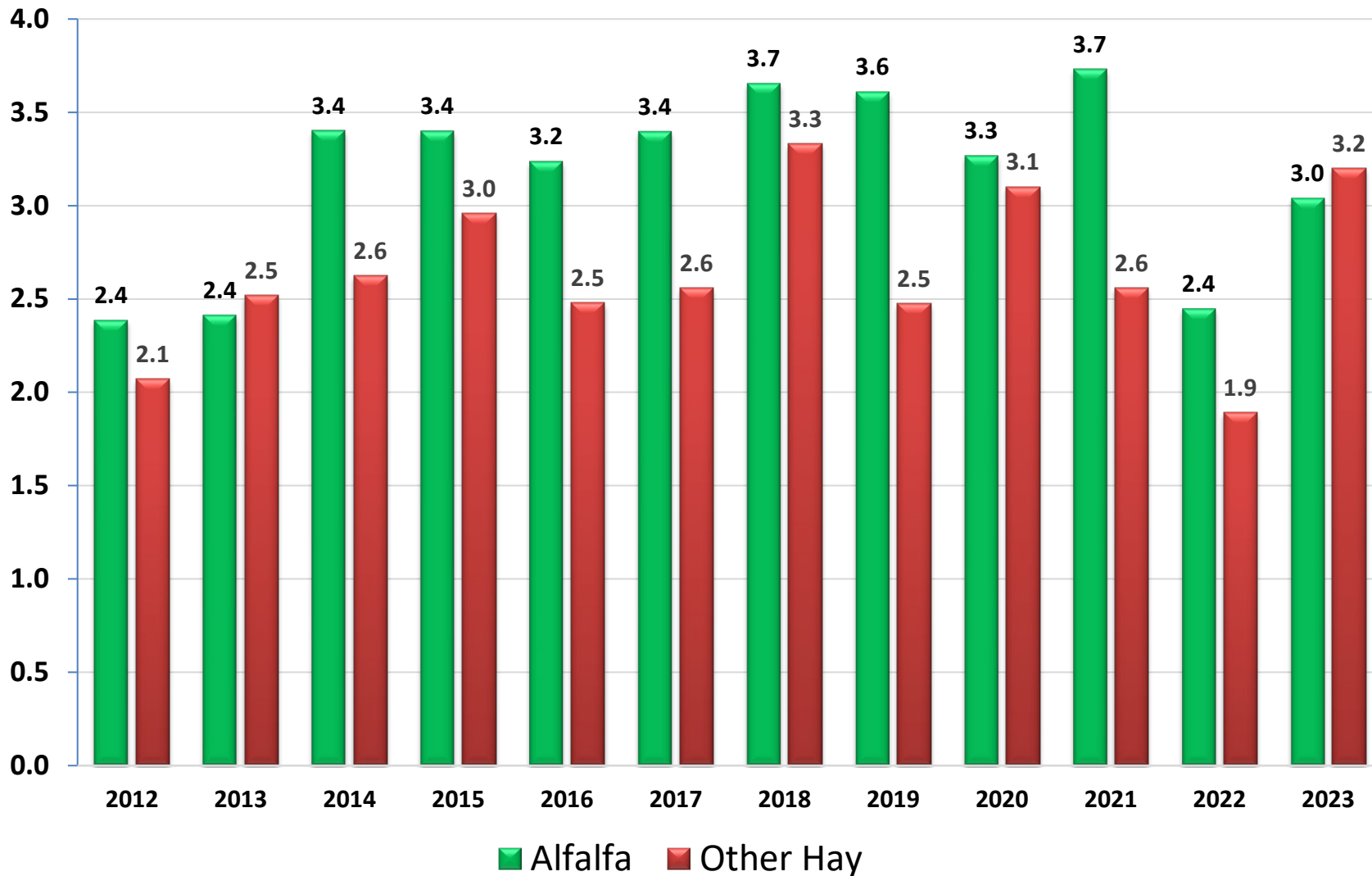
## Nebraska

**Alfalfa hay** production, at 3.04 million tons, is up 24% from last year. Area for harvest, at 760,000 acres, is down 4% from a year ago. Yield of 4.00 tons per acre is up 0.90 ton per acre from 2022.

**All other hay** production, at 3.20 million tons, is up 69% from last year. Area for harvest, at 1.60 million acres, is up 19% from a year ago. Yield of 2.00 tons per acre is up 0.60 ton from 2022.

# November 2023 Hay Production Nebraska

Million Tons





# Upcoming Events

Release Date	Title
December 15	Small Grain County Estimates
December 22	Cattle on Feed
December 22	Hogs and Pigs
January 12	Annual Crop Production
January 31	Cattle
February 13	2022 Census of Agriculture Release



United States Department of Agriculture  
**National Agricultural Statistics Service**

---

---

**All Reports Available At**  
[www.nass.usda.gov](http://www.nass.usda.gov)

**[Nicholas.Streff@usda.gov](mailto:Nicholas.Streff@usda.gov)**

**For Questions**  
402-437-5541  
800-582-6443